

125



Accommodation

Located on the eastern boundary of the development towards the city centre, 125 Hagley Road has received an extensive refurbishment which offers tenants the highest specification modern office space.

With 29,888 sq ft (2,777 sq m) of office space, a typical floor in the five-storey building offers 6,000 sq ft (557 sq m) of office accommodation split either side of the central core.

Entry to the building is via a dedicated reception leading to two 10-person passenger lifts serving all floors. 125 Hagley Road also benefits from shower facilities.

Specification

- Floorplates 6,000 sq ft (557 sq m)
- 24-hour manned on-site security and CCTV
- 73 surface and undercroft car parking spaces (ratio of 1:409 sq ft)
- On-site storage available
- Low overall occupancy costs
- Flexible leases
- Comfort cooling
- LG7 compliant lighting
- Suspended ceilings
- Central heating
- Perimeter compartment trunking
- Refurbished in accordance with DDA requirements

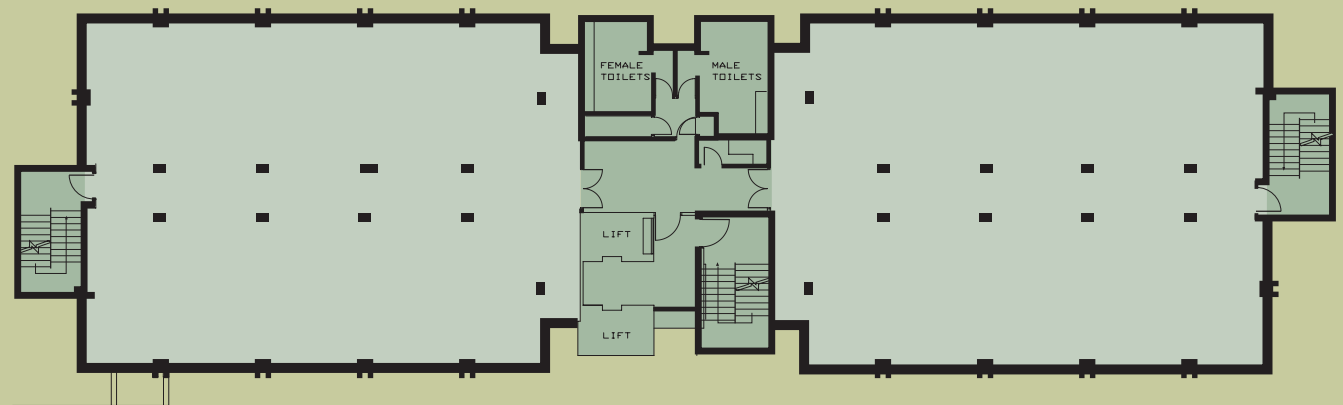


Accommodation Schedule

WHOLE BUILDING

30,675 SQ FT

2,849.80 SQ M



Typical floorplate



www.123-127.co.uk

A development by:



a.nash@stoford.com



For enquiries please contact:



charles.warrack@kingsturge.com
jonathan.carmalt@kingsturge.com



matthew.long@dtz.com
andrew.berry@dtz.com